

Durango Professional Plaza

3110 South Durango Drive
Las Vegas, NV 89117

Latitude: 36.132668, Longitude: -115.278138
702.968.2474

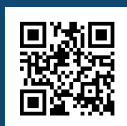
www.MoonbeamProperty.com



COME
GROW
WITH
US.

- Durango Professional Plaza is a 1-story ±15,600 square foot multi-tenant office property located on the west side of Las Vegas and approximately 7.5 miles southwest of Las Vegas CBD.
- The property is on the east side of Durango Drive just north of Desert Inn Rd and is easily accessible to I-95.
- The property is across the street from a large master planned community.
- The surrounding area offers many other large strip centers, high end car dealerships, and prestigious golf course community, as well as new commercial/office development. Several office parks are located in the immediate area with Durango Professional Plaza being among the newer ones.

Demographics	1 Miles	3 Miles	5 Miles
2013 Population	24,437	160,962	412,714
2013 AVG HH Income	\$61,399	\$71,265	\$68,709
2013 Number of HH	10,358	64,716	162,019



MOONBEAM  CAPITAL
INVESTMENTS LLC

NEW YORK ■ LAS VEGAS ■ ATLANTA

CONTACT:

COURTNEY BRUMBELOW

phone: 702.968.2474 Ext. 749

e-mail: c.brumbelow@mlgpllc.com

www.MoonbeamProperty.com

Durango Professional Plaza

3110 South Durango Drive
Las Vegas, NV 89117

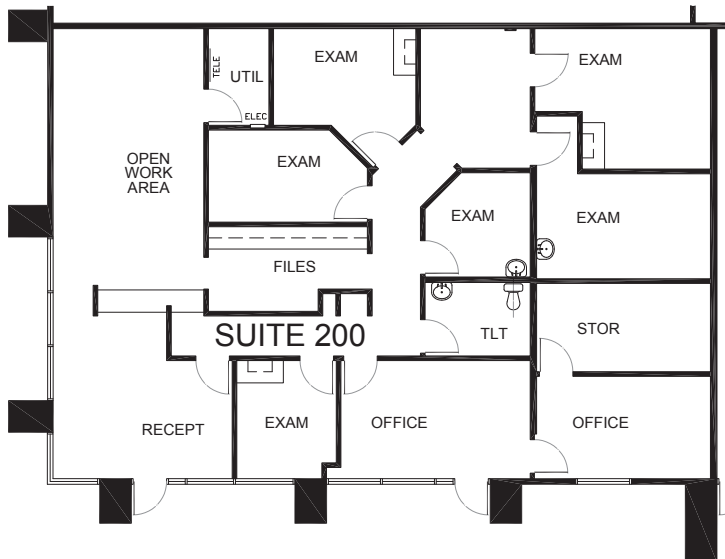
Latitude: 36.132668, Longitude: -115.278138
702.968.2474

www.MoonbeamProperty.com

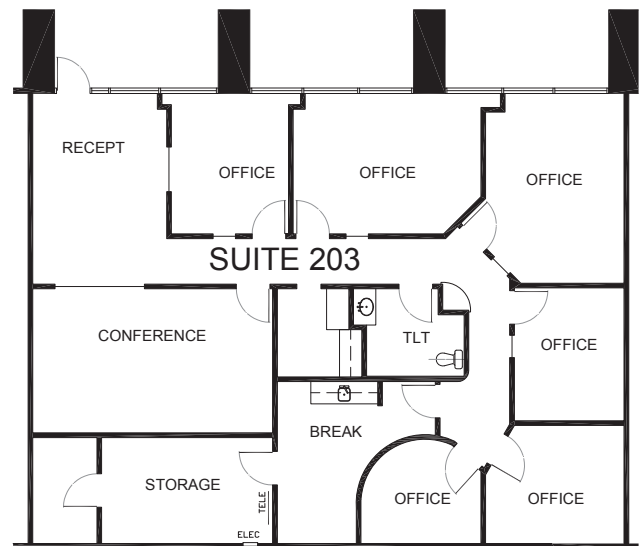


3110 South Durango Drive

SUITE 200
2,477 Square Foot



SUITE 203
2,235 Square Foot



Latitude: 36.132668
Longitude: -115.278138

**MOONBEAM CAPITAL
INVESTMENTS LLC**

NEW YORK ■ LAS VEGAS ■ ATLANTA

CONTACT:

COURTNEY BRUMBELOW

phone: 702.968.2474 Ext. 749

e-mail: c.brumbelow@mlgpllc.com

www.MoonbeamProperty.com